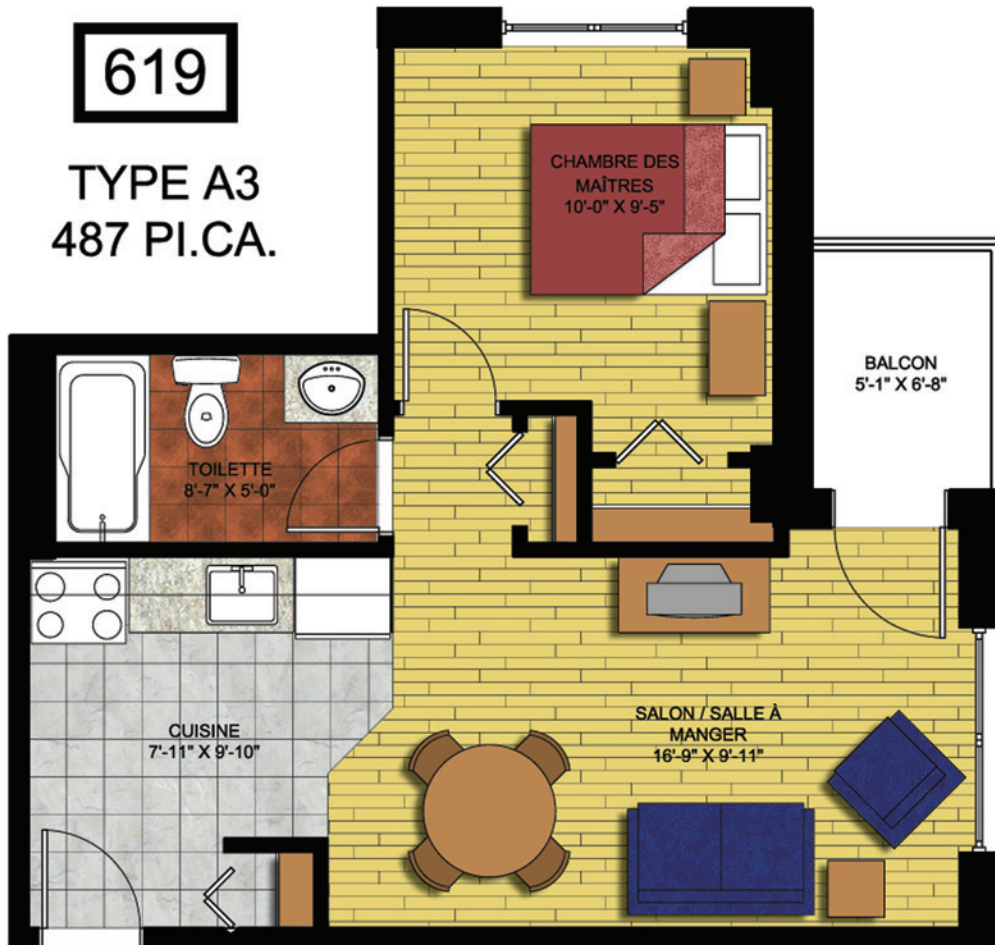


619

TYPE A3  
487 PI.CA.



**ALAIN  
TETREAU**  
ARCHITECTE  
910 RUE SHEFFORD  
BROMONT (QUÉBEC) J2L 1C3  
TEL: (450) 534-0910  
FAX: (450) 534-1487  
architecte@qc.aito.com

**L'aito**